

# AULT HUCKNALL PARISH NEWSLETTER

*Spring 2023*



## **Dream Comes True**

Stainsby Festival has had a long held dream of owning its own festival fields.

For the past eight years the trustees have been running a Dream of Fields campaign to try and raise the funds to buy the fields outright.

Now it's come true!

Just hours before last Christmas, they signed on the dotted line to own them.

Tony Trafford, Chair of the Festival Trustees said, "This has been a fantastic effort on the part of so many people to raise this money. We are very, very grateful to everyone who's donated whether big or small. We're absolutely amazed at the generosity that's been shown to us and the love that so many people have for the event."

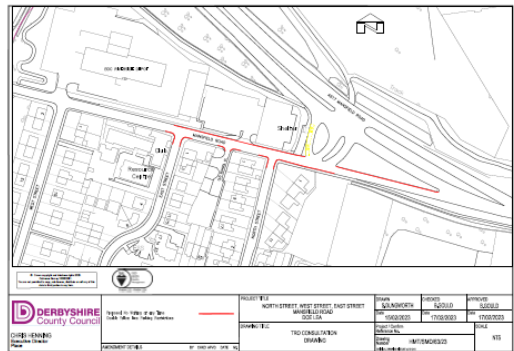
He also went on to thank Paddy Lane for his stewardship of the fields over the last 20 years since he saved them from being sold away from the festival.

"We owe Paddy a heartfelt thanks for his patience in looking after them until we could raise the wherewithal to buy them ourselves."

The festival now has ambitious plans to renew the facilities on site to serve the festival for its next fifty years.

This year's Stainsby Festival is from the 21<sup>st</sup> to the 23<sup>rd</sup> of July.





## The Future's Yellow (Learning Your Lines?)

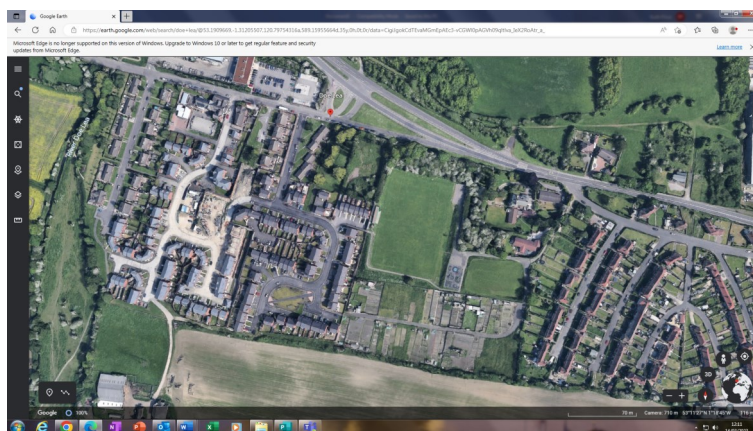
There have been many complaints about the parking around the junctions with Mansfield Road, North Street and East Street at Doe Lea, making turning in and out of them difficult and unsafe for drivers and pedestrians alike.

So, the Highways department at the County Council has plans to introduce double yellow lines to improve things.

By keeping parking away from these junctions, this will improve sightlines for drivers, make pedestrians more visible and let the buses turn into the bus stop without having to mash up the grass around the Doe Lea island.

The Parish Council has a copy of the proposals if anyone wants to see the exact details.

## A safer walk



Ever since the new development at Doe Lea was planned, the Parish Council has been trying to get a safer way for wheelchairs, pushchairs and pedestrians to get between Doe Lea and Bramley Vale.

It's been a worry because the path on the hill is so narrow. The traffic is so busy and fast moving that it isn't a pleasant walk especially for children going to school.

After lengthy negotiations with DCC the Parish is putting in a ramped foot path which will connect with the recreation ground running across the land behind the houses on East Street. The project will be financed by Section 106 monies

Residents will be consulted on screening the pathway from their gardens before work commences.

DCC have recently sold the empty plot - the parish council was an unsuccessful bidder - so the path will provide a barrier between any future development and the existing homes.

The original plan was for there to be a footpath where the existing steps are now but the ground was too steep.

At last we will have a safe and pleasant walk to link the two villages!

Having recently attended the Herpetofauna Workers meeting 2023, which provides the latest information on research and conservation for amphibians and reptiles in the UK I thought it might interest the local residents to find out about these species in the local area and take part in the National surveys for these species.

During the last century, populations of amphibian and reptile species have declined significantly in many areas of the world. So over the next year I will provide a bit of information on each UK reptiles species in the local area and how you can help in the recovery of these species.

You may or may not be aware we have three species of snake in the UK. One of these the grass snake *Natrix helvetica* is present along the Doe Lea River. Grass snakes are protected by law in the UK, it is illegal to deliberately kill, injure or sell grass snakes so if you spot one please enjoy them from a distance!

Grass snakes are non-venomous and are extremely timid, moving off quickly when disturbed. If cornered they can feign death.

This is the UK's longest snake, growing to well over a metre in length. Typically grass snakes are grey-green in colour. They have a distinctive yellow and black collar around the neck, with black bars down the sides of the body.

Grass snakes are Britain's only egg-laying snake. Females lay eggs in June or July, normally in rotting vegetation (including garden compost heaps) which acts as an incubator. The eggs hatch into miniature versions of the adults in the late summer months.

This species feeds primarily on fish and amphibians, grass snakes can occasionally venture into garden ponds in the summer months. If you would like to encourage this species into your garden why not consider creating a wildlife pond, leave areas of longer grassland uncut, add a log pile and create a compost heap.



Please enjoy our regular newsletter article looking at environmental issues—provided by parish councillor Rebecca Hill-Harmsworth

To take part in the National surveys or to find out more please visit:

National Reptile Survey - <https://reptile-survey.arc-trust.org/>

National Amphibian Survey - <https://amphibian-survey.arc-trust.org/>



## STAY HEALTHY!



Exercise is good for you! And how many times have we heard that and promised ourselves to do something about it. We know it helps us stay healthy but having the time and the money is often a problem.

At Doe Lea centre it needn't be. It's on the doorstep for many of us and prices for classes there are kept low. Pay as you go and no expensive gym contracts.

The yoga class for instance - the group has people from 18 to 80 - costs £6 for an hour and a half of gentle stretching and relaxation.



The Ju-Jitsu classes are popular with all ages too but if you prefer to exercise on your own or with a friend then the mini gym is for you. It has bikes and tread mills, as well as a shower.

You'll get a friendly welcome too so why not come and take a little time for yourself?

Alongside physical health it also important to look after your mental health and we have a range of fun activities that are great for keeping your mind active whilst, socialising and developing new skills



Music and singing have been proven to have a massive impact on mental wellbeing in people of all ages and our "Doe Lea Voices" singing for fun session and "Dust it Off" music session are a great fun way to express some creativity. Both sessions are aimed at people aged 16 and older and we work together to create our own versions of popular songs. There are even opportunities to perform at local events (you may have heard the

Doe Lea Voices at the Christmas Fayre) and thanks to our recently install recording and rehearsal space we'll be working towards some recording opportunities too.

We also give opportunities to young musicians offering discounted rehearsal space alongside our "Doe Lea Rocks" children and young people music project which works with young musicians to form bands and learn songs.

You can find out more about our regular activities by following us on facebook: @DoeLeaResourceCentre, checking out our website: [doeleacentre.org](http://doeleacentre.org) or by checking out our What's on Guide we've sent along with the newsletter.



## HOLIDAY ACTIVITIES

Once again this year we have secured funding for activities during the school holidays. Activities take place on Wednesdays and Thursdays during the Easter, Summer and Christmas Holidays and on Wednesdays during the half term holidays.

They're a great opportunity for families to get together and be physically active with the Bolsover Sports Development team and Extreme Wheels.

There's also loads of crafts and arts going on as well as opportunities to have a go at film and music making. The activity days are completely free and even include a free buffet lunch.

# Doe Lea Holiday Fun Days

**FREE**  
FUN DAY INCLUDING  
A BUFFET LUNCH

**2023 Dates**

Easter Holidays  
5th, 6th, 12th, 13th  
April

May Half Term  
Weds 31st May

Summer Holidays  
26th, 27th July  
2nd, 3rd, 9th, 10th,  
16th, 17th, 23rd,  
24th, 30th, 31st  
August

Join us for a fun day of crafts and activities suitable for all the family including sports, crafts, arts and Extreme Wheels (from 1 pm).






Doe Lea Centre,  
Mansfield Road,  
Doe Lea,  
S44 5PD  
Contact: 01246 850209



## Guesswhere ?

Remember this from our last Newsletter?  
Did you guess correctly?

The Answer—Doe Lea Miners Welfare

## DOE LEA CRAFT AND CHAT

Established in 2015, Doe Lea Craft and Chat group has gone from strength to strength and has approximately 20 members. The group meets between 12.30pm and 3.30pm every Monday, apart from Bank Holidays and a 2 week break during August. Members of the group are friendly and always make visitors and newcomers welcome.



There is a specific craft or activity on offer each week, but members can bring their own work along to get on with if they prefer. Members often put forward ideas of crafts they would like to do and if we have the necessary resources, it is usually possible to facilitate this. Members are always willing to share their skills and expertise with others who might be less experienced in a particular craft.

Recent projects have included origami; mixed media; card making; embroidery; felt making; hand and machine sewing; knitting; crochet; seasonal crafts. The group also recently welcomed renowned paper pioneer Jennifer Collier who led workshops on paper flower-making and paper birdboxes.

There is a weekly fee of £3, this includes a hot or cold drink. Members often bring cake and biscuits along to enjoy while having a cuppa and a chat.

Occasionally there is small charge for materials if anything has to be bought specially for a particular project, but the group has a wealth of resources to dip into.

The group is run by Gwenda Culkin, textile and mixed media artist who has many years of experience working within local communities. The ethos of the group is

***Everyone Is Welcome.***

---

### **St John the Baptist Church Ault Hucknall**

#### **Easter Services**



Good Friday—7th April at 7.00 p.m.

A devotion of hymns and readings

Easter Sunday—9th April at 10.30 a.m.

Holy Communion

**IMMENSE THANKS TO OUR RESIDENT PHOTOGRAPHER WILLY LANE WHO  
ONCE AGAIN HAS CAPTURED SOME SPECTACULAR VIEWS , WILDLIFE  
AND FAUNA , ALL FROM WITHIN THE PARISH**





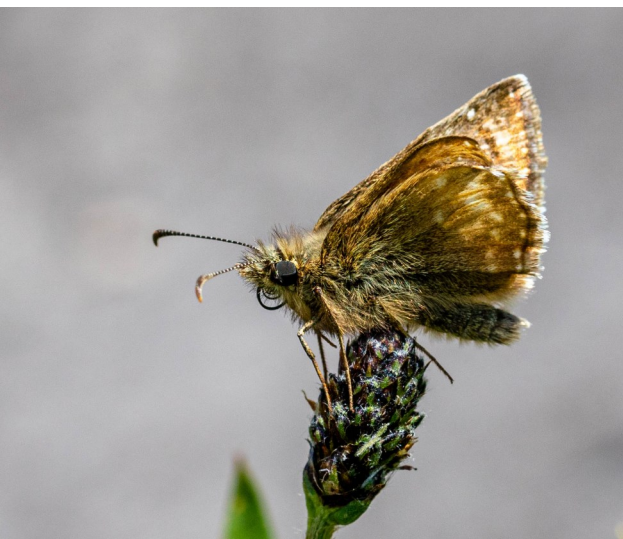
**RAPESEED**



**HARDWICK PONDS**



**HARDWICK PONDS**



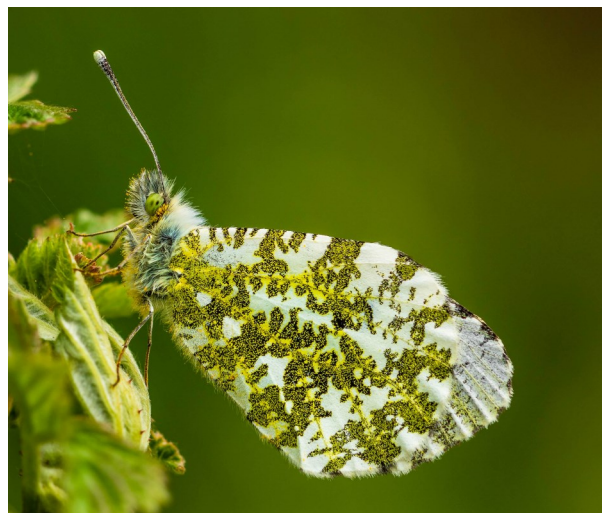
**DINGY SKIPPER BUTTERFLY**



**HARDWICK PONDS**



**COMMON SPOTTED ORCHID**



**ORANGE-TIP BUTTERFLY**

## Parish Councillors

Councillor Ann Syrett (Chair of the Council)	annsyrett@aol.com
Councillor Tony Trafford (Vice Chair of the Council)	tonytraf@aol.com
Councillor Lisbeth Adsetts-Moseley	ladsetts@gmail.com
Councillor Don Adsetts- Moseley	dbmoseley@btinternet.com
Councillor Tricia Clough	triciacough@hotmail.com
Councillor Tracy Howell	tracyhowell@doelea.org.uk
Councillor Steve Poole	steve@yellowspadedesign.com
Councillor Jason Wright	wrightjason1984@gmail.com
Councillor Rebecca Hill-Harmsworth	rharmsworth@hotmail.co.uk
1 vacancy	

## District Councillors

Councillor Tricia Clough	patricia.clough@bolsover.gov.uk
Councillor Tom Kirkham	tom.kirkham@bolsover.gov.uk
Councillor Liz Smyth	liz.smyth@bolsover.gov.uk

## County Councillor

Councillor James Barron	james.barron@derbyshire.gov.uk
-------------------------	--------------------------------

## Useful Numbers

Bolsover District Council	01246 242424	Derbyshire County Council	01629 533190
Police Non-Emergency	101	Urgent Medical Problem	111
Gas Emergency	0800 111 999	Electrical Emergency	105

**E R PRICE**  
**PARISH CLERK & RFO**  
117 STATION ROAD,  
NORTH WINGFIELD,  
CHESTERFIELD  
S42 5JQ

**07587 107122**  
**theclerk@aulthucknallparishcouncil.gov.uk**  
**www.aulthucknallparishcouncil.gov.uk**

*The material and information available in this newsletter is designed to provide general information. Every effort has been made to ensure that all of the information is accurate and up to date and the parish council cannot take liability for any information which may contain errors or omissions. Information contained within this newsletter does not constitute legal or other professional advice. Any products, services or organisations advertised in the newsletter are not necessarily endorsed by the Parish Council.*